

As Woman age it's natural for changes to occur in vaginal health, but many of us feel unable to discuss the more intimate symptoms with our family GP, so struggle in believing there's nothing that can be done to help anyway. But pain during sex, vaginal dryness and urinary incontinence can be symptoms, and have a detrimental effect on your quality of life, relationship and well being.

HOW DOES THIS THERAPY WORK ?

MonaLisa therapy works by applying gentle laser energy to the walls of the vagina. This is administered in tiny dots meaning the percentage of vaginal tissue affected at any time by the laser is minimal.

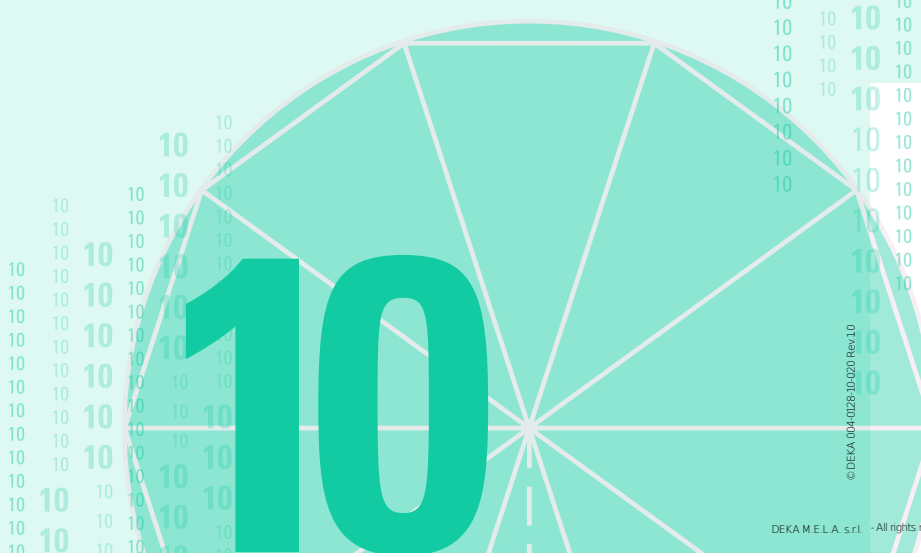
The specialist laser delivers fractional carbon dioxide laser energy to the vaginal wall tissue, which causes production of new collagen and rehydrates and tightens the membrane lining and vaginal wall

MONA LISA TOUCH

MonaLisa Touch Laser Therapy



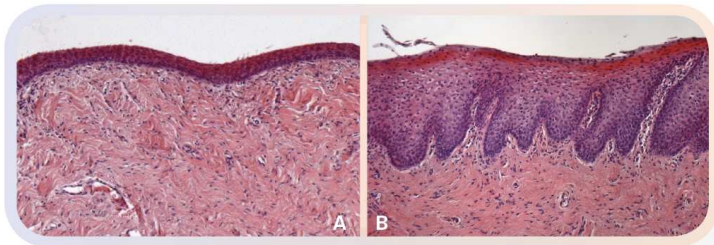
MEDICINE AND AESTHETICS



© DEKA 04-0225-10-020 Rev10

MonaLisa Touch is an innovative laser procedure without the need for anesthesia and with minimal pain or side effects

The following histological images show the vaginal mucosa before and after the MonaLisa Touch treatment. The marked chaHistological preparation of a section of the vaginal mucosa stained with haematoxylin and eosin (H&E). (A) Vaginal mucosa in the basal condition with a thinner epithelium. (B) The same patient 2 months after a session with the MonaLisa Touch®. The thicker epithelium and shedding of numerous big cells from the free surface, together with the larger diameter of epithelial cells rich in glycogen, demonstrate the restored metabolic trophism and dynamics of the whole epithelium.



Physicians are calling the MonaLisa Touch procedure "game changing" as there are currently limited treatment options for restoring gynecologic health. Patients have stated that Mona Lisa Touch is a "life changing" procedure, and they feel almost immediate results after the first of the three recommended treatments.

Treatment	Price/Session	Number of Sessions	Total	Total price with discount
<b>Skin resurfacing: Face, Neck, Decolletage, Eyes, Hands</b>				
Half Area	550	3	1650	1320
1 Area	750	3	2250	1800
2 Areas	950	3	2850	2280
3 Areas	1150	3	3450	2760
4 Areas	1350	3	4050	3240
5 Areas	1500	3	4500	3600
Madonna Eye Lift	500	3	1500	975
Full Face Skin resurfacing CO2 + RF	850	3	2550	2040
Full Face Skin resurfacing CO2 + RF + PRP	1350	3	4050	3240
<b>PRP (Platelet-Rich Plasma) therapy</b>	500	4	2000	1400
<b>Microneedling + Peeling (including home preparation)</b>	250	4	1000	800
<b>Scar Management</b>				
Scar Management 3x3 cm	250	5	1250	1000
Scar Management 10x10 cm	400	5	2000	1400
Scar Management 20x20 cm	500	5	2500	1500
<b>MonaLisa Touch</b>				
Vulvar rejuvenation/lightening - front	1000	3	3000	2400
Vulvar rejuvenation/lightening - front & back	375	3	1125	900
Vulvar rejuvenation/lightening - front & back	500	3	1500	1200
<b>Stretch marks: Upper Arms/Legs, Stomach, Breast, Buttocks</b>				
1 Area	250	5	1250	1062
2 Areas	350	5	1750	1400
3 Areas	450	5	2250	1687
4 Areas	550	5	2750	1925
5 Areas	650	5	3250	2275
<b>Moles and warts</b>				
Mole removal	250			
Skin tag removal (not eyes area)	50			
Keratosis lesions	50			
Brown Spots	50			
Dermatosis Papulosa Nigra	10			
Hiperplasia Sebacea	25			
Plantar warts	50			
Genital warts	350			
GP Consultation Mole check up with Nevisense & C-Cube	100			
<b>Aesthetic Consultation</b>				
Patch test	Free of charge			
Prescription, including the antibiotic ointment but not antiviral	50			

Discounts available for full area treatments

Full area	Full area with discount
1500	1350